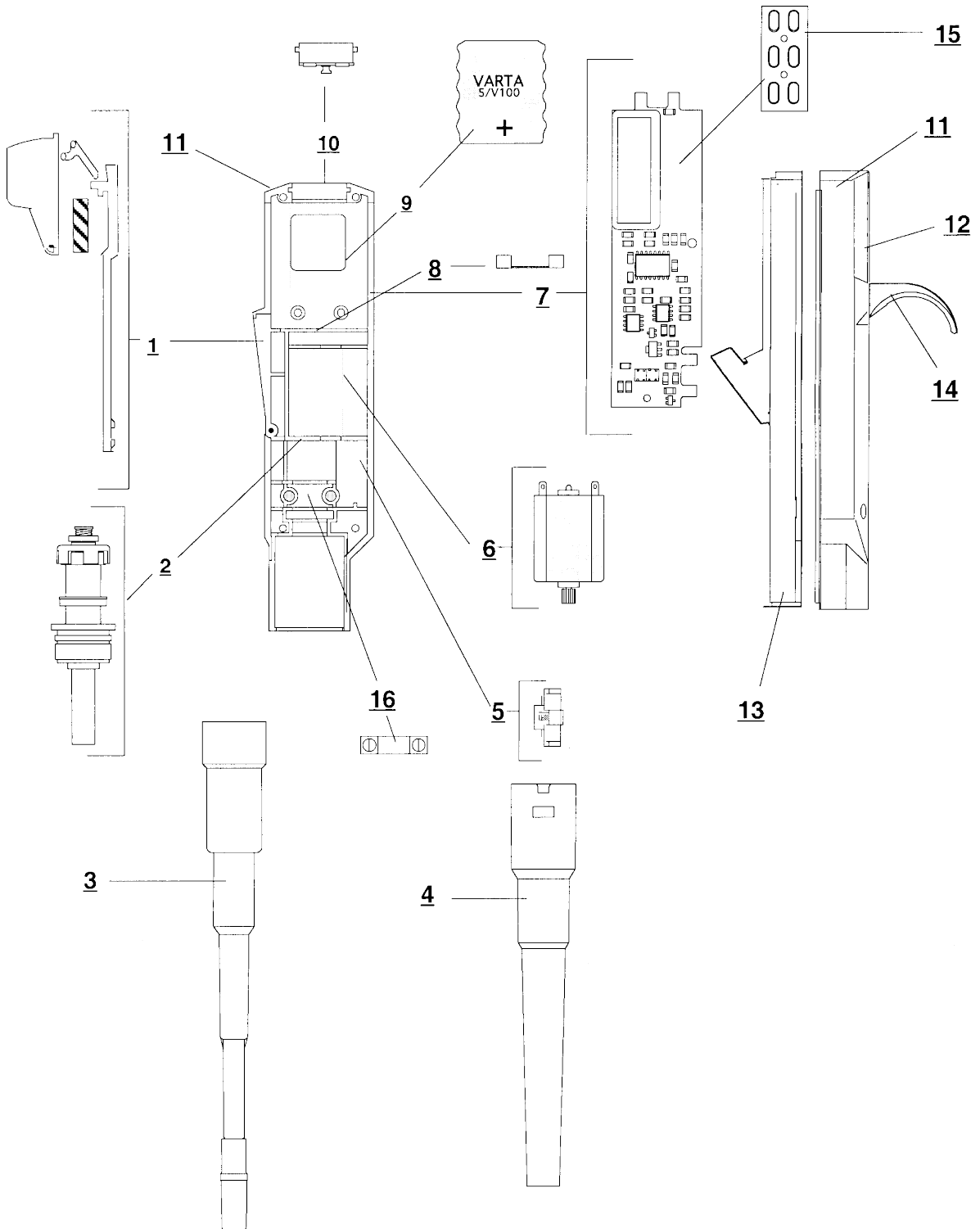


12.0. EXPLODED DIAGRAMS AND SPARE PART LISTS

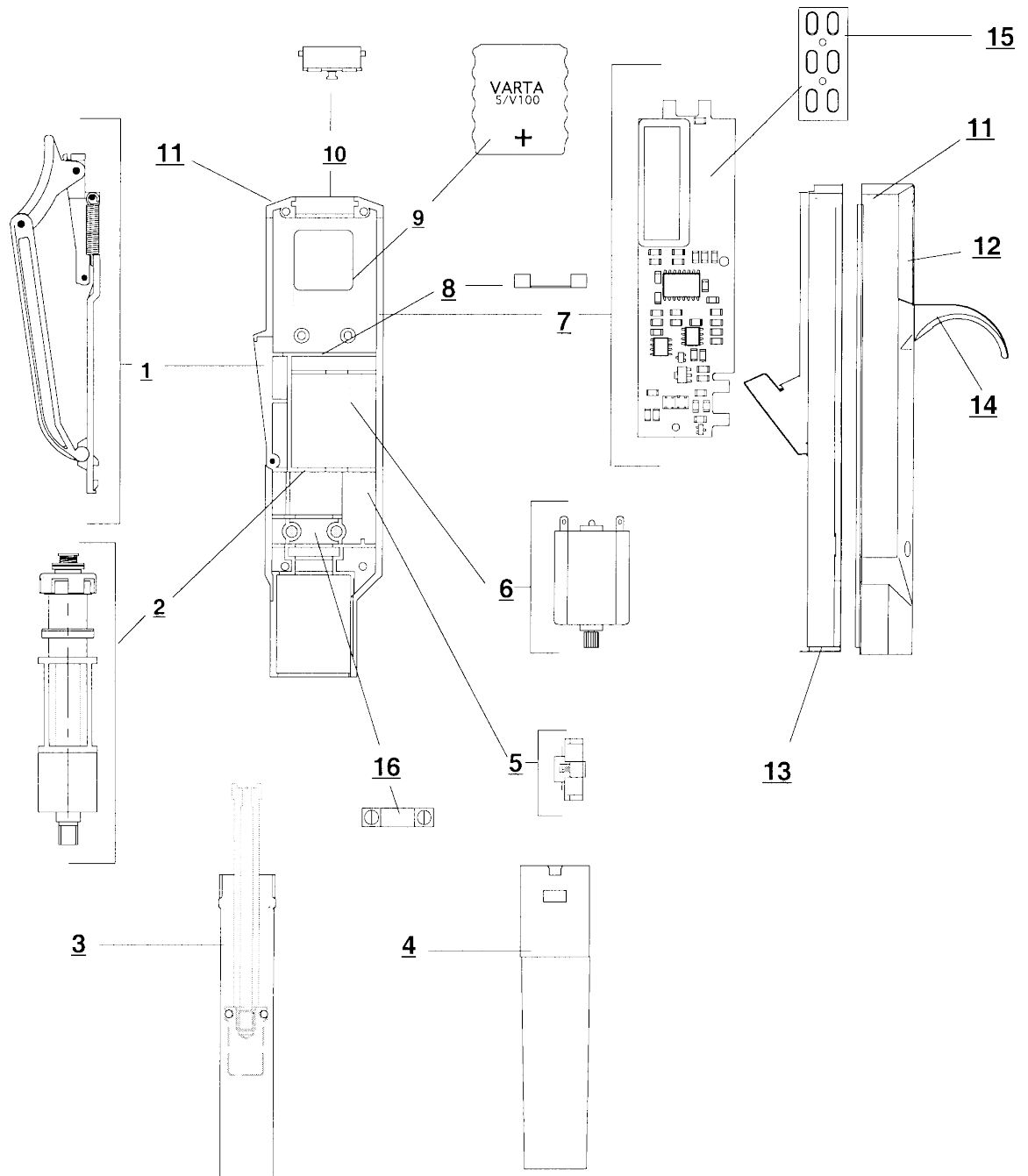
12.1. EXPLODED DIAGRAM; SINGLE CHANNEL MODELS UP TO 1000 μ l



12.1.1. SPARE PARTS LIST FOR SINGLE CHANNEL MODELS UP TO 1000µl

Fig. No.	Part Description	Cat. Code
1	Tip ejector assembly	712510
2	Linear actuator	711250
3	Piston assembly,	
	0.2-10µl	711830
	5-100µl	711050
	10-250µl	711230
	20-500µl	711560
	50-1000µl	711060
4	Tip ejector collar,	
	0.2-10µl	711150
	5-100µl	711140
	10-250µl	711140
	20-500µl	711160
	50-1000µl	711170
5	Stopper assembly	711100
6	Motor assembly	711260
7	PICO 2 - board	
	0.2-10µl	711870
	5-100µl	712800
	10-250µl	712801
	20-500µl	712802
	50-1000µl	712803
8	Battery holder	712804
9	Battery, NiMH	711002
10	ACCU3-assembly	711030
11	Bottom plate assembly, incl. battery cover	712960
12	Battery cover	712961
13	Cover assembly 2,	
	0.2-10µl	712855
	5-100µl	712856
	10-250µl	712857
	20-500µl	712858
	50-1000µl	712859
14	Finger grip	712760
15	Keyboard	711080
16	Holder, linear actuator	711251
ACCESSORIES:		
	Silicon grease, 15 ml	721670

12.2. EXPLODED DIAGRAM ; SINGLE CHANNEL 5000µl



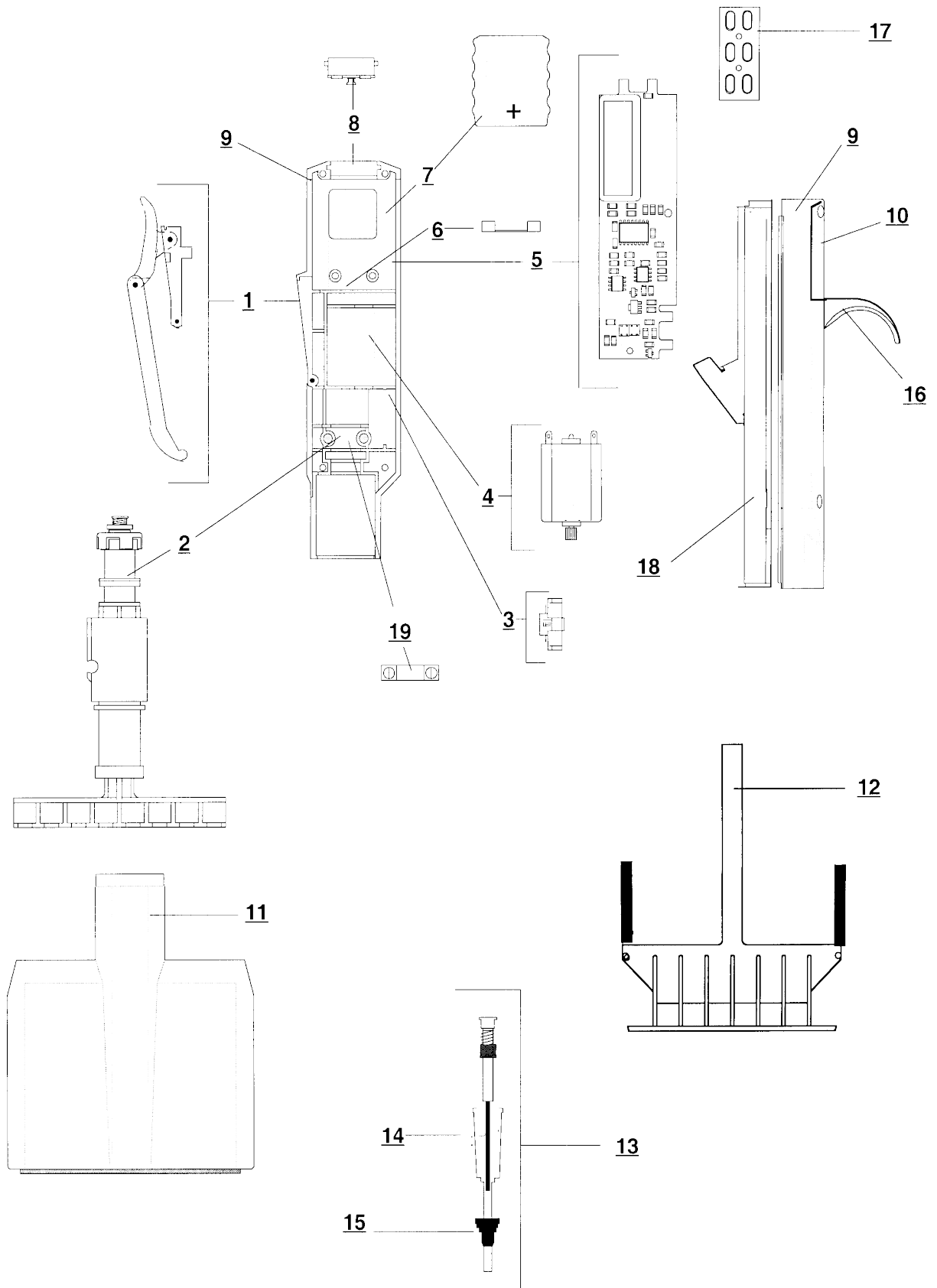
12.2.1. SPARE PARTS LIST FOR SINGLE CHANNEL MODEL 5000 μ l

Fig. No.	Part Description	Cat. Code
1	Tip ejector assembly	712511
2	Linear actuator	712190
3	Piston assembly,	711880
4	Tip ejector collar,	712520
5	Stopper assembly	711100
6	Motor assembly	711260
7	PICO 2 - board	711920
8	Battery holder	712804
9	Battery, NiMH	711002
10	ACCU3-assembly	711030
11	Bottom plate assembly, incl. battery cover	712960
12	Battery cover	712961
13	Cover assembly 2,	712860
14	Finger grip	712760
15	Keyboard	711080
16	Holder, linear actuator	711251

ACCESSORIES:

Silicon grease, 15 ml	721672
-----------------------	--------

12.3. EXPLODED DIAGRAM; MULTICHANNEL 0.2-10 μ l



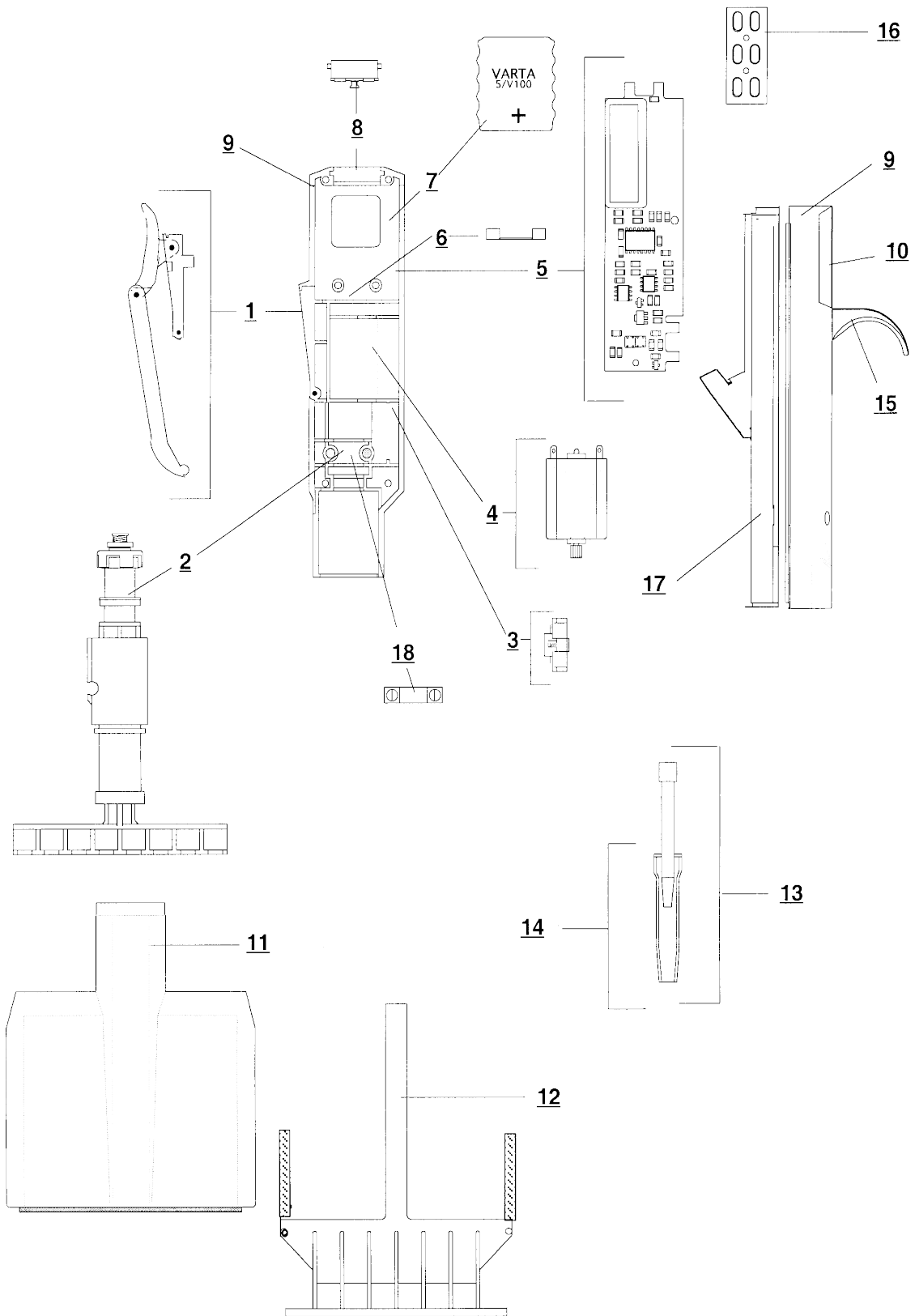
12.3.1. SPARE PARTS LIST FOR MULTI CHANNEL MODEL 0.2 - 10 μ l

Fig. No.	Part Description	Cat. Code
1	Tip ejector assembly	711190
2	Linear actuator and piston holder	711690
3	Stopper assembly	711100
4	Motor assembly	711260
5	PICO 2 - board	711870
6	Battery holder	712804
7	Battery, NiMH	711002
8	ACCU3-assembly	711030
9	Bottom plate assembly, incl. battery cover	712960
10	Battery cover	712961
11	Tip cone housing, ccomplete	711664
12	Tip ejector bar	721269
13	Piston assembly, complete	711880
14	Tip cone cylinder	721275
15	Tip cone sealing, 8 pcs	721276
16	Finger grip	712760
17	Keyboard	711080
18	Cover assembly 2,	712855
19	Holder, linear actuator	711251

ACCESSORIES:

Silicon grease, 15 ml	721670
-----------------------	--------

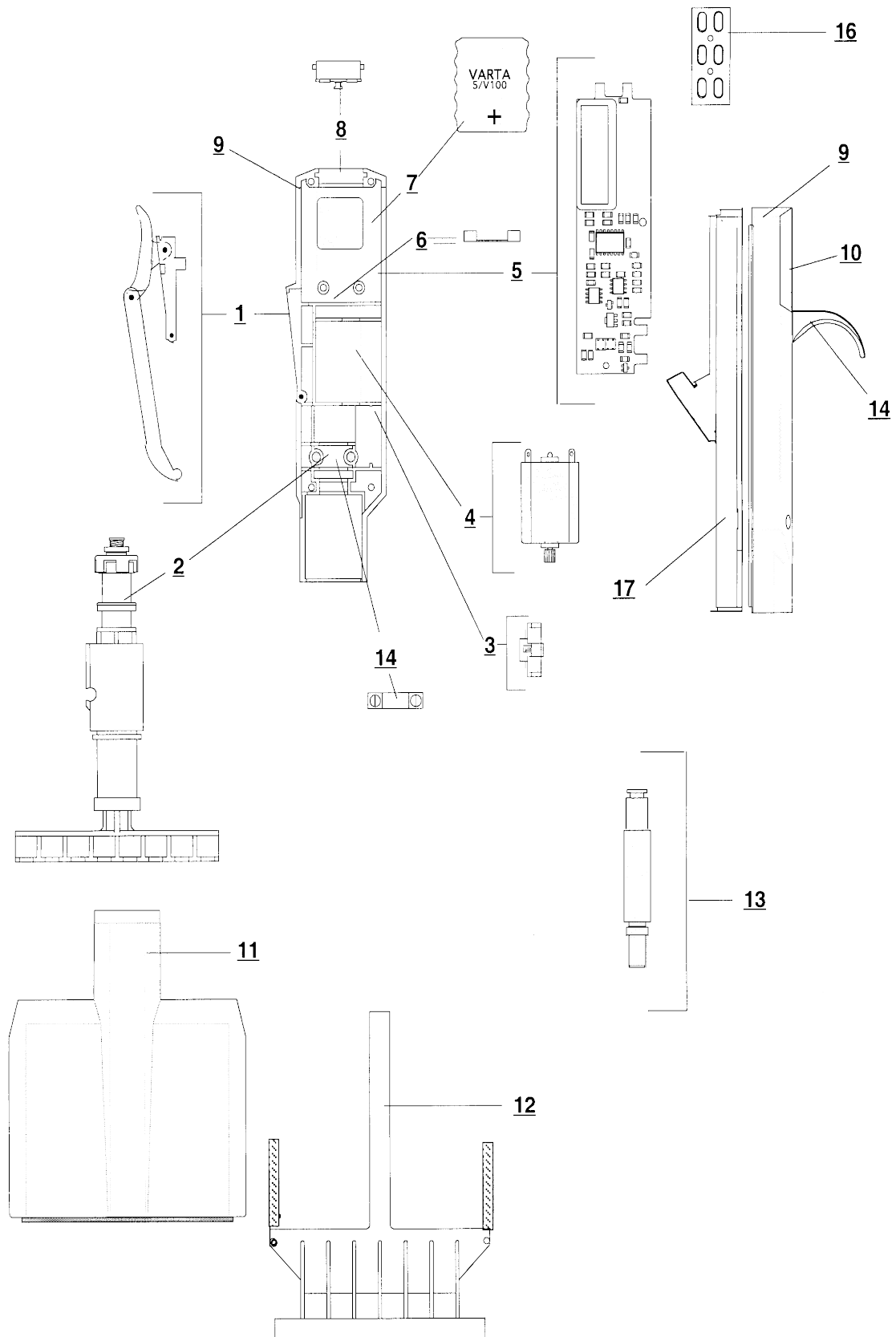
12.4. EXPLODED DIAGRAM; MULTICHANNEL 100µl AND 250µl



12.4.1. SPARE PARTS LIST FOR MULTI CHANNEL MODELS 100 µl AND 250 µl

Fig. No.	Part Description	Cat. Code
1	Tip ejector assembly	711190
2	Linear actuator and piston holder, 4-channel,	711680
	8-channel,	711690
	12-channel,	711700
3	Stopper assembly	711100
4	Motor assembly	711260
5	PICO 2 - board, 100 µl	712807
	250µl	712808
6	Battery holder	712804
7	Battery, NiMH	711002
8	ACCU3-assembly	711030
9	Bottom plate assembly, incl. battery cover	712960
10	Battery cover	712961
11	Tip cone housing, complete 4-channel,	711650
	8-channel,	711660
	12-channel,	711670
12	Tip ejector bar, 4-channel,	721268
	8-channel,	721269
	12-channel,	721270
13	Piston assembly, complete 100 µl,	712809
	250 µl,	712810
14	Tip cone cylinder, 100 µl,	712811
	250 µl,	712812
15	Finger grip	712760
16	Keyboard	711080
17	Cover assembly 2, 100 µl,	712856
	250 µl,	712857
18	Holder, linear actuator	711251
ACCESSORIES:		
	Silicon grease, 15 ml	721670

12.5. EXPLODED DIAGRAM; MULTICHANNEL 1200 μ l



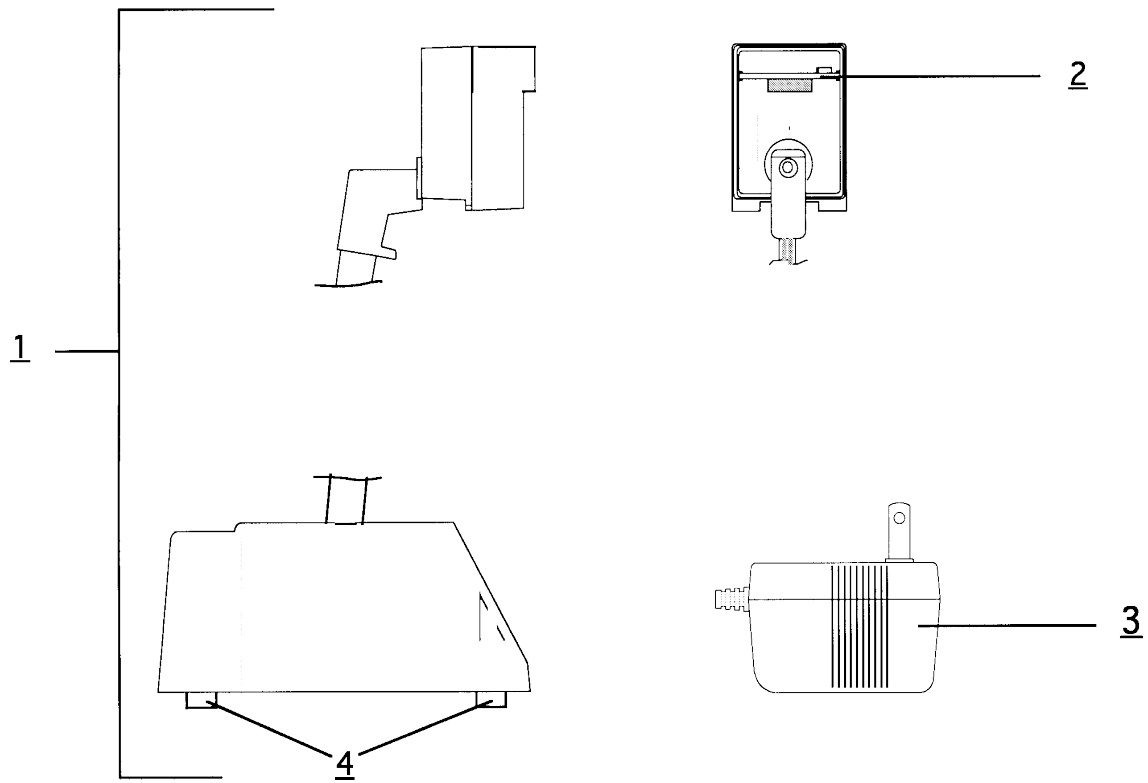
12.5.1. SPARE PARTS LIST FOR MULTI CHANNEL MODEL 50-1200 μ l

Fig. No.	Part Description	Cat. Code
1	Tip ejector assembly	711190
2	Linear actuator and piston holder	712813
3	Stopper assembly	711100
4	Motor assembly	711260
5	PICO 2 - board	712814
6	Battery holder	712804
7	Battery, NiMH	711002
8	ACCU3-assembly	711030
9	Bottom plate assembly, incl. battery cover	712960
10	Battery cover	712961
11	Tip cone housing, complete	712815
12	Tip ejector bar	712816
13	Piston assembly, complete	712817
14	Holder, linear actuator	711251
15	Finger grip	712760
16	Keyboard	711080
17	Cover assembly 2,	712974

ACCESSORIES:

Silicon grease, 15 ml	721670
-----------------------	--------

12.6. EXPLODED DIAGRAM; CHARGING STAND

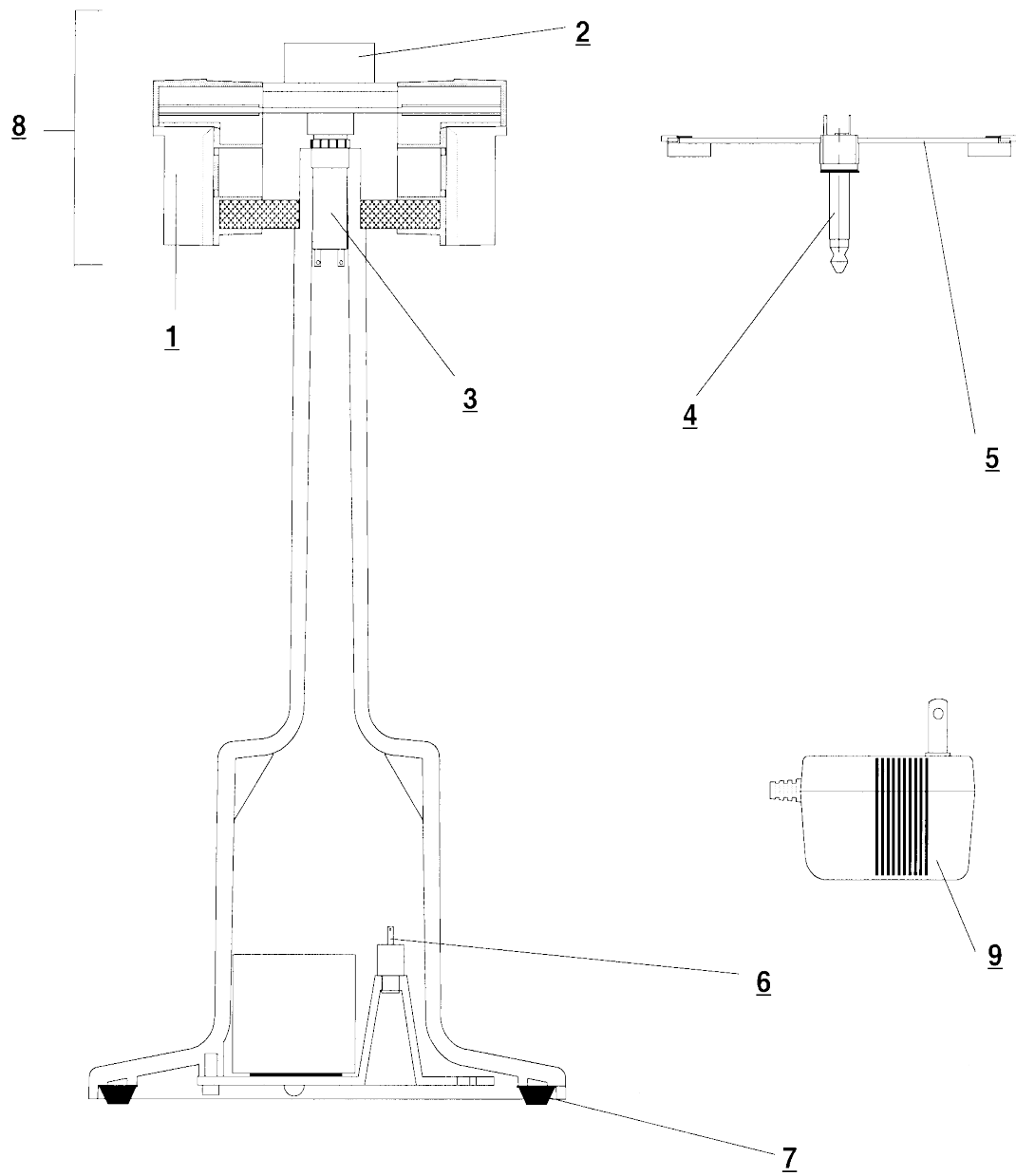


12.6.1.SPARE PARTS LIST FOR CHARGING STAND

Fig. No.	Part Description	Cat. Code
1	Charger stand complete 9V (female adaptor)	712425
2	SUPO assembly	711040
3	Transformer :	
	Euro 9V	712381
	U.K. 9V	712391
	U.S. 9V	712401
	Japan 9V	712411
4	Bottom pads, 4pcs.	712834

N.B. All 12V transformers (old style) have male adaptors, and all 9V have female. This is a safety feature to prevent the 9V and 12V transformers and stands being mixed. Any pipettor may be used with either stand.

12.7. EXPLODED DIAGRAM; CHARGING CAROUSEL



12.7.1.SPARE PARTS LIST FOR CHARGING CAROUSEL

Fig. No.	Part Description	Cat. Code
1	Head frame	712881
2	Rotating support	712882
3	Connecting plug, female	712883
4	Connecting plug, male	712884
5	Charger board, 4-place, incl. plug,male	712885
6	Transformer plug, female	712886
7	Bottom pads, 6pcs.	712887
8	Charging head, complete	71291
9	Transformer :	
	Euro 9V	712381
	U.K. 9V	712391
	U.S. 9V	712401
	Japan 9V	712411

N.B. All 12V transformers (old style) have male adaptors, and all 9V have female. This is a safety feature to prevent the 9V and 12V transformers and stands being mixed. Any pipettor may be used with either stand.