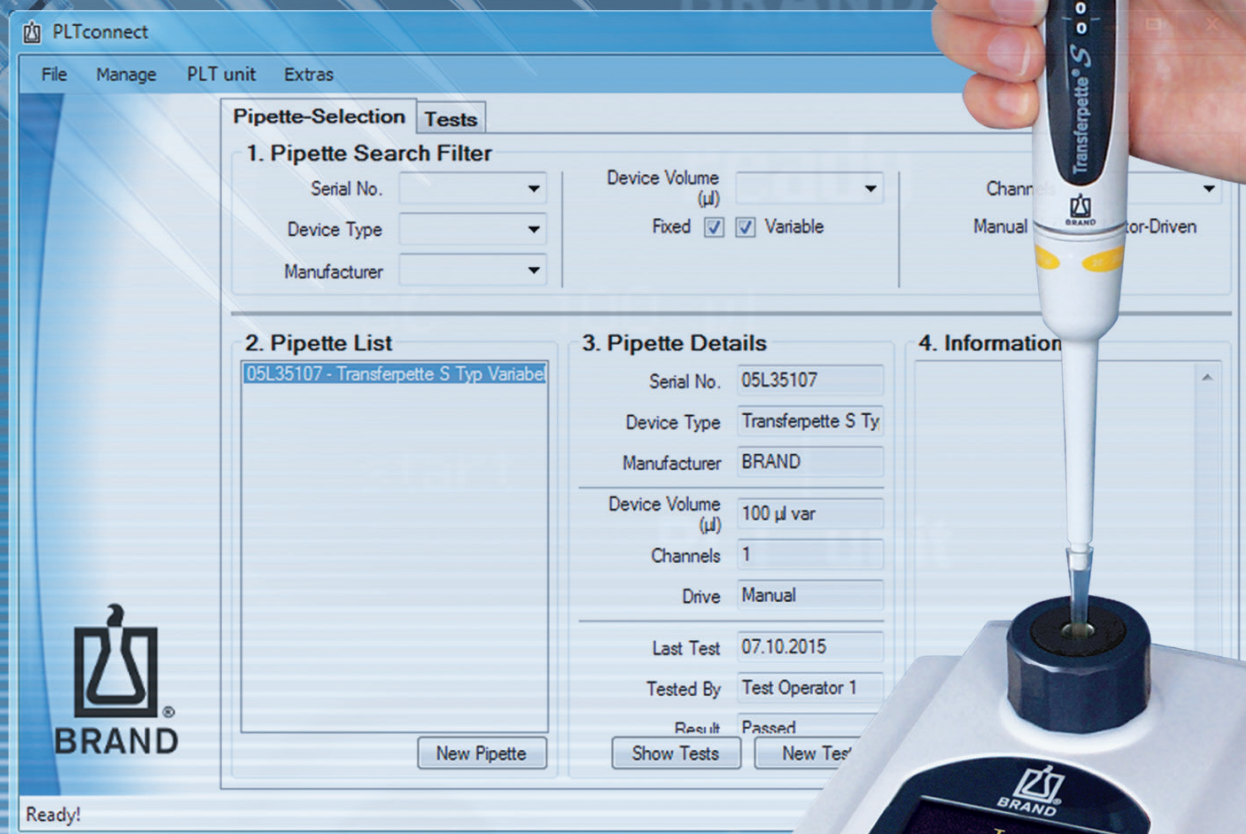


# PLTconnect

## PLT unit software

F I R S T C L A S S · B R A N D





**BRAND® is a trademark of BRAND GMBH + CO KG, Germany.**

**Microsoft®, MS-Windows® are registered trademarks of Microsoft Corporation, USA.**

Insofar as brand names or protected terms, symbols or representations belonging to other owners are used in this publication, they are used exclusively for reference purposes and without any claim of right. Brand names reproduced are the property of the respective owner.

<b>1. Introduction</b>	<b>4</b>
1.1. PLT unit	4
1.2. PLTconnect	4
<b>2. Software installation</b>	<b>5</b>
2.1. System requirements	5
2.2. Rights	5
2.3. Preparations for installation	5
2.4. Installing PLTconnect	5
<b>3. Connecting the PLT unit to the PC</b>	<b>6</b>
<b>4. Start the program</b>	<b>7</b>
4.1. Connecting the device	7
4.2. User settings	8
<b>5. Using the program</b>	<b>9</b>
5.1. Creating pipettes	9
5.2. Carrying out testing	10
5.3. Filter function	12
5.4. Import/export data	13
5.5. Self-test	13

# 1. Introduction

---

Before using the PLTconnect software, please read through these operating instructions as well as the instructions for the PLT unit carefully.

## 1.1 PLT unit

According to monitoring of measuring instruments, air-displacement pipettes must be checked at regular intervals and the results must be compared with the ISO 8655-2 error limits.

However, a calibration certificate only reflects the results at the time of testing. The time between these calibrations is crucial, since leaks can occur at any time.

Well over 80% of pipettes sent in for repair have leaks and are outside their volume tolerances, even if they don't drip.

The most common cause for the lack of accuracy in piston-stroke pipettes is system leaks.

Leaks arise through damage to the seals, pistons or tip sampling cones. Often invisible to the eye, these faults can lead to significant volumetric errors.

The PLT unit from BRAND, the leak-checking device for air cushion pipettes, detects the smallest of leaks in seconds!



## 1.2 PLTconnect

The PLT unit software, also known as PLTconnect, is a program for facilitating the documentation of leak checks carried out with the PLT unit from BRAND. The test results are transferred from the PLT unit into the program by means of automatic measured value transmission. The result is displayed as a test certificate and saved in the program. Documentation of your test results is made significantly easier.

The program supports leak checking with and without tips as well as static and dynamic measurements.

Master data and limit values for standard single-channel and multi-channel pipettes in volumetric ranges from 1 µl to 10 ml are already stored in the program for your use. Testing is independent of the device manufacturer. You can also easily create new devices.

### 2.1 System requirements

In order to be able to use the operating software, your PC or Laptop must meet the following minimum system requirements:

- Windows® XP (Service Pack 3)
- Windows® Vista 32-Bit und 64-Bit (Service Pack 2)
- Windows® 7 32-Bit und 64-Bit

Additionally required:

- CD-ROM drive
- USB 2.0 interface
- Microsoft® Installer 3.1
- Windows® NET-Framework Version 4

These programs are generally already contained in the aforementioned operating systems. If necessary, you can download the current versions from Microsoft®.

### 2.2 Rights

You require software installation rights and the necessary write rights for your PC. If you do not have these rights, please contact your system administrator.

### 2.3 Preparations for installation

If there is an older version of the PLT unit software already installed on your PC, this should be uninstalled first. To do so, click on:

**Control Panel** ⇨ **Programs** ⇨ **Programs and functions**

Then click on Uninstall for the "PLT connect" entry. Then follow the instructions on the screen. The program will now be deleted. Any log data already existing on your system will be retained after the uninstall process.

### 2.4 Installing PLTconnect

Place the CD-ROM in the drive. Then open the "English" folder and the "PLTconnect" folder on the CD. Start "setup.exe" and follow the setup assistant.

If you accept the standard settings, the program is installed in C: \Program Files(x86)\BRAND\PLTconnect. After the installation has been successfully completed, the icon to start the program can be found on the desktop.

The operating instructions can likewise be found in the "English" folder.

### 3. Connecting the PLT unit to the PC

---

Connect the PLT unit to a mains socket with the mains adapter.

Then connect the PLT unit to a USB 2.0 port on the computer with a connection cable.



Start the PLTconnect program by double-clicking on the BRAND PLTconnect icon or the desktop, or from the START menu, via

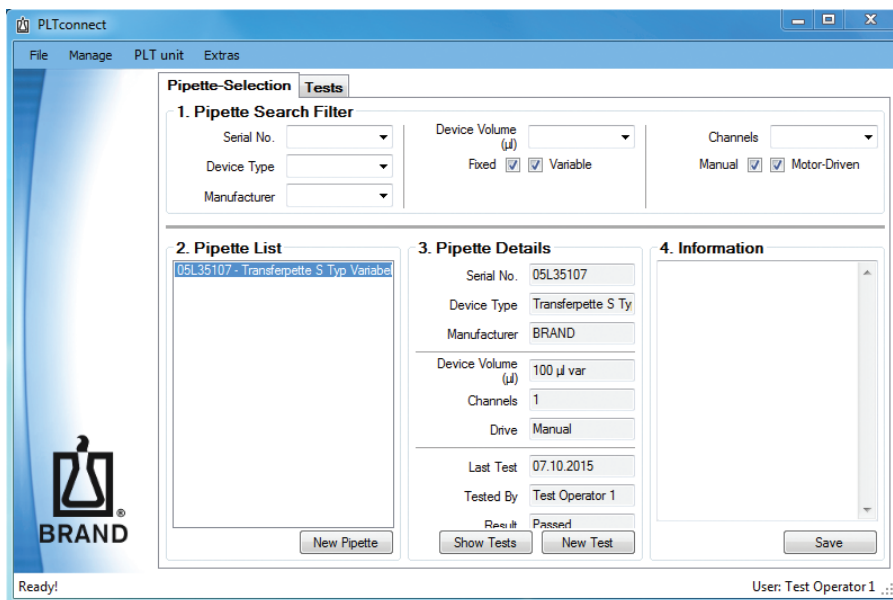
**START ⇒ All Programs ⇒ BRAND ⇒ PLTconnect.**

### 4.1 Connecting the device

After starting, the program automatically interfaces with a connected device. If this is successful, "Ready!" is displayed in the lower left status bar. If the connection to the PLT unit failed, a fault message will be displayed instead.

In order to establish a connection with the device manually, please click on

**File ⇒ Connect To PLT unit.**



## 4. Start the program

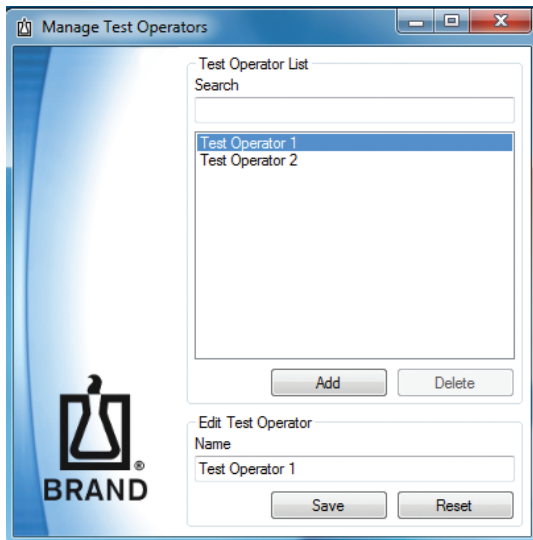
### 4.2. User settings

The user is shown in the bottom right corner of the user interface.

To create a new user, please click on

**Manage** ⇨ **Test Operators**.

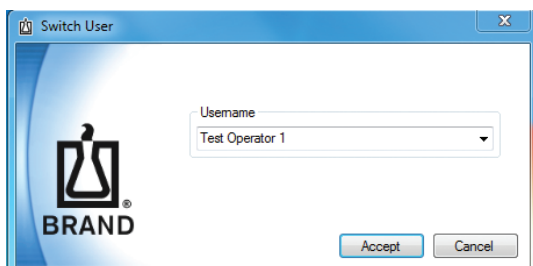
A new tester can be created in the “Manage Test Operators” window or an existing tester can be sought, removed or edited.



To change users, please click on

**File** ⇨ **Switch User**.

You can select a user name from the window that opens and confirm this by clicking on **Accept**.

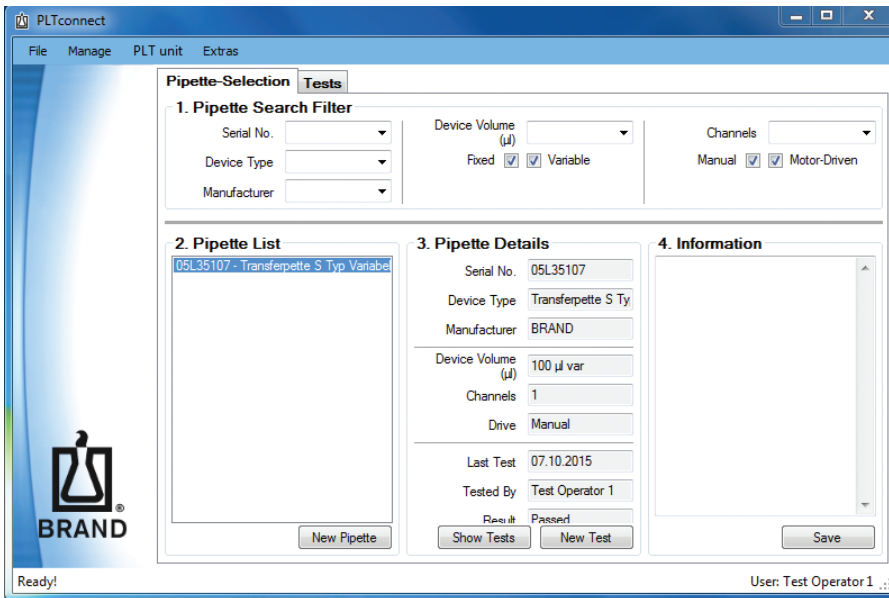




## 5.1 Creating pipettes

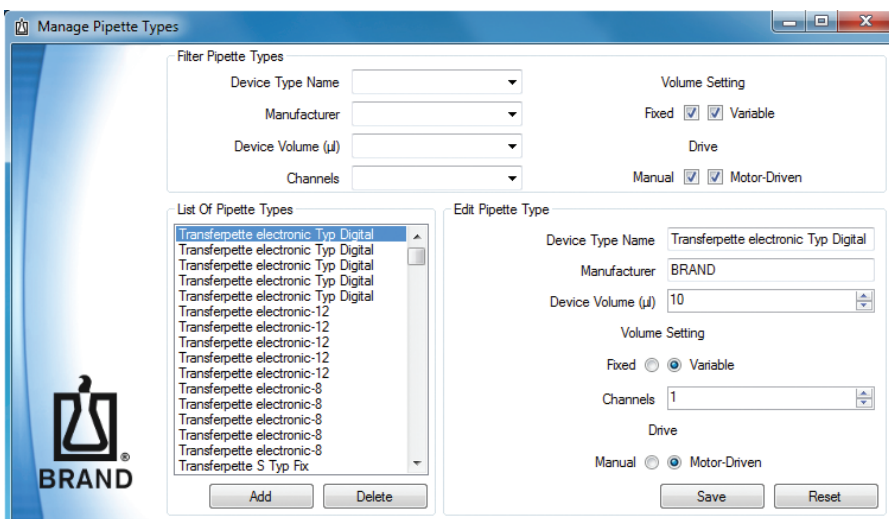
To create a new pipette, please click on the **New pipette** button on the **Pipette selection** tab.

Alternatively, you can also select **File** ⇒ **Add New Pipette**.



Then follow the instructions from the assistant.

You can filter, insert, remove or change the device types stored in the system under **Manage** ⇒ **Device Types**.



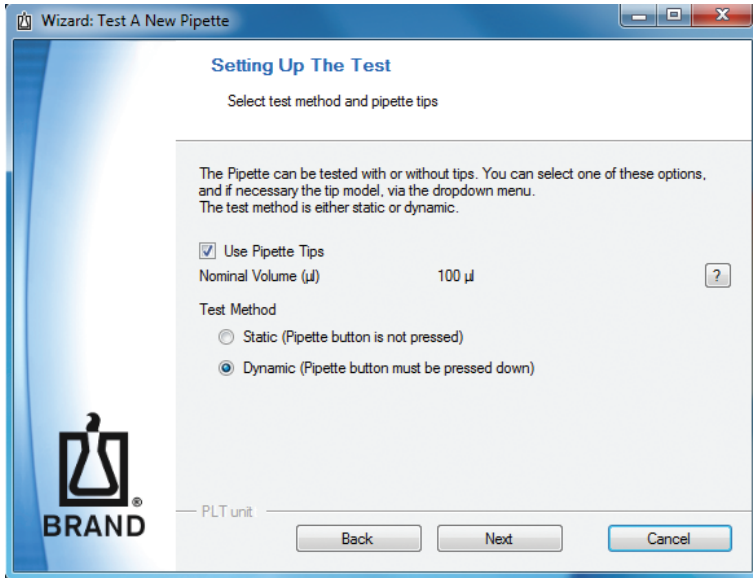
## 5. Using the program

### 5.2 Carrying out testing

To carry out a test, first click on the **New test** button on the **Pipette selection** tab or select **File** ⇒ **Add New Test**.

The “Carry out a new test” assistant opens. Please follow the instructions from the assistant.

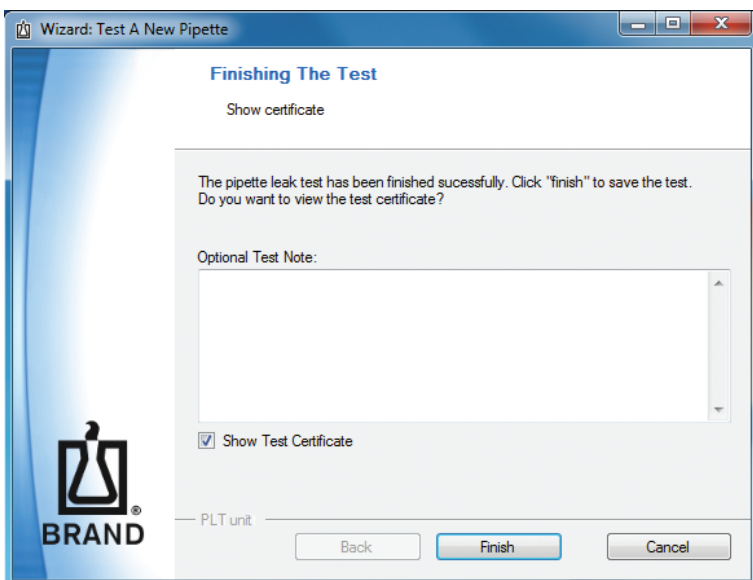
In the “Setting Up The Test” window, you can determine whether a static or dynamic test is to be carried out and whether it is to be carried out with or without tip installed. The settings will be automatically passed on to the PLT unit.



The measurement is started by pressing the left button on the PLT unit.

Then, the result can be transferred to the PC by pressing the right button on the PLT unit.

Please tick the “Show Test Certificate” checkbox to display the test certificate. Then you can complete the testing.





BRAND GMBH + CO KG  
 Postfach/P.O. Box 11 55  
 D-97877 Wertheim /Main  
 Germany  
<http://www.brand.de>

## PLT unit Prüfprotokoll Test report

### Prüfobjekt / Unit under test

#### Transferpette S Typ Variabel

<i>Serien-Nr. / Serial No.</i>	<b>05L35107</b>
<i>Nennvolumen / Nominal volume</i>	<b>100 µl var</b>
<i>Anzahl Kanäle / Channels</i>	<b>Einkanal / Single channel</b>
<i>Hersteller / Manufacturer</i>	<b>BRAND</b>

### Prüfmittel / Test equipment (PLT unit)

<i>Firmware Version / Firmware version</i>	<b>2.05.002</b>
<i>Serien-Nr. / Serial No.</i>	<b>11M99170</b>

### Prüfbedingungen / Test conditions

<i>Prüfungsmethode / Test method</i>	<b>statisch / static</b>
	<b>ohne Spitzen / without tips</b>
<i>Prüfdruck / Test pressure</i>	<b>-150 hPa</b>

### Messwerte / Measurements

<i>Leckrate / leakage rate (hPa * ml / s)</i>	<i>geprüfte Kanäle / tested channels</i>	<i>Ergebnis / result</i>
<b>0</b>	<b>1</b>	<b>bestanden / passed</b>

*Gesamtergebnis / Final result* **bestanden /  
 passed**

24.09.2015

Prüfer 1

Datum / Date

Prüfer / Inspector

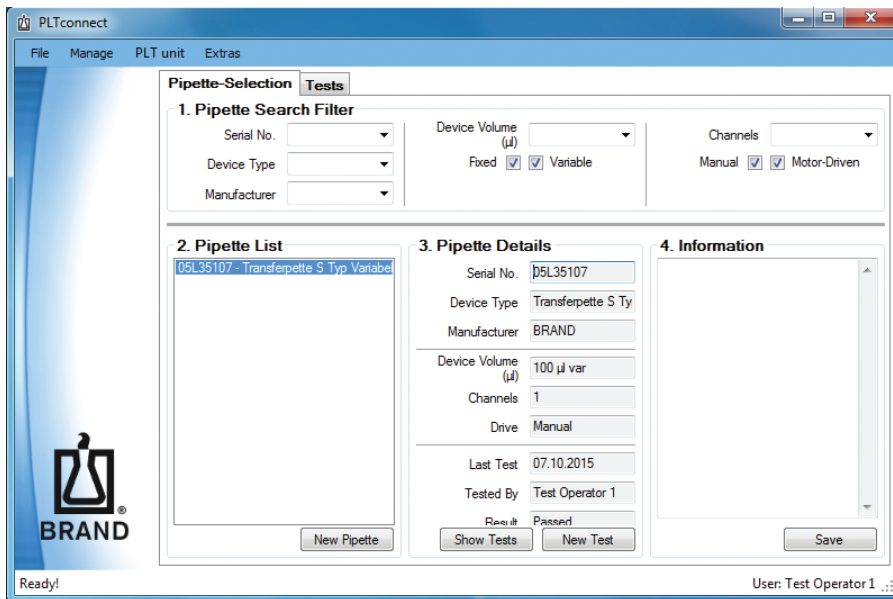
Unterschrift / Signature

## 5. Using the program

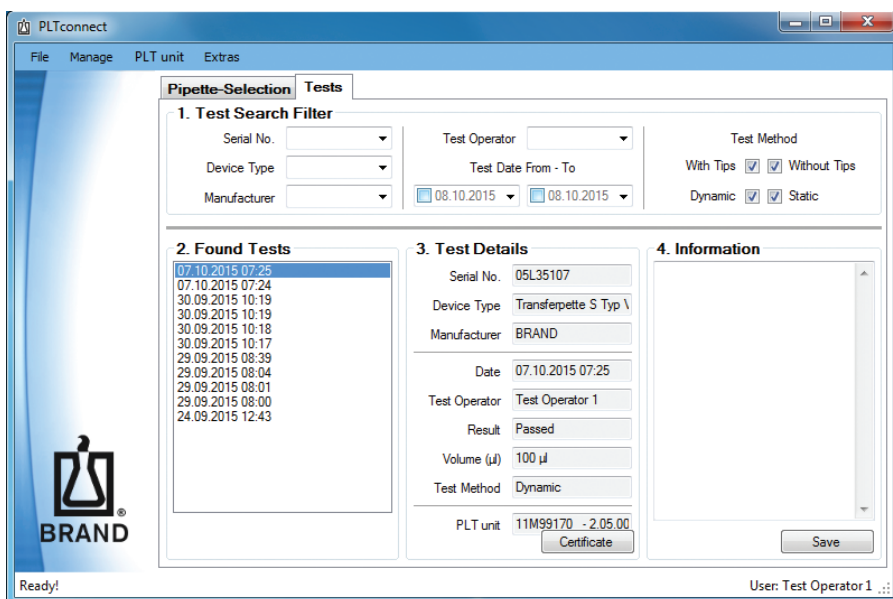
### 5.3. Filter function

You can select pipettes already stored in the system via defined criteria in the “1. Pipette Search Filter” field in the **Pipette Selection** tab. These are listed in the “2. Pipette List” field.

The details of a pipette selected in field 2 are displayed in the “3. Pipette Details” field and “4. Information” field. To create or expand a description, enter the desired information into the “4. Information” field and then click on **Save**.



Corresponding field breakdowns and filter functions for displaying tests already carried out can be found in the Tests tab. You can display and print the test certificates here by clicking on the Certificate button.



### 5.4. Import/export data

To import existing data sets, please click on:

**File** ⇒ **Database Archive** ⇒ **Import From File.**

and select the corresponding file from the dialog window that opens.

To export datasets, please click on

**File** ⇒ **Database archive** ⇒ **Export To File.**

### 5.5. Self-test

The self-test is used to detect any leaks in the BRAND PLT unit itself.

There are two different tests available. The quick test takes approx. 2 minutes and should be carried out daily. The full test takes approx. 12 minutes. It includes the additional differentiated testing of the internal tanks and should be carried out weekly.

You can choose between the two tests under **PLT unit** ⇒ **Self Test.**

The appropriate assistant opens. Please follow the instructions from the assistant.

After the test is complete, the test certificate opens.

