

Removing the lock/unlock assy system

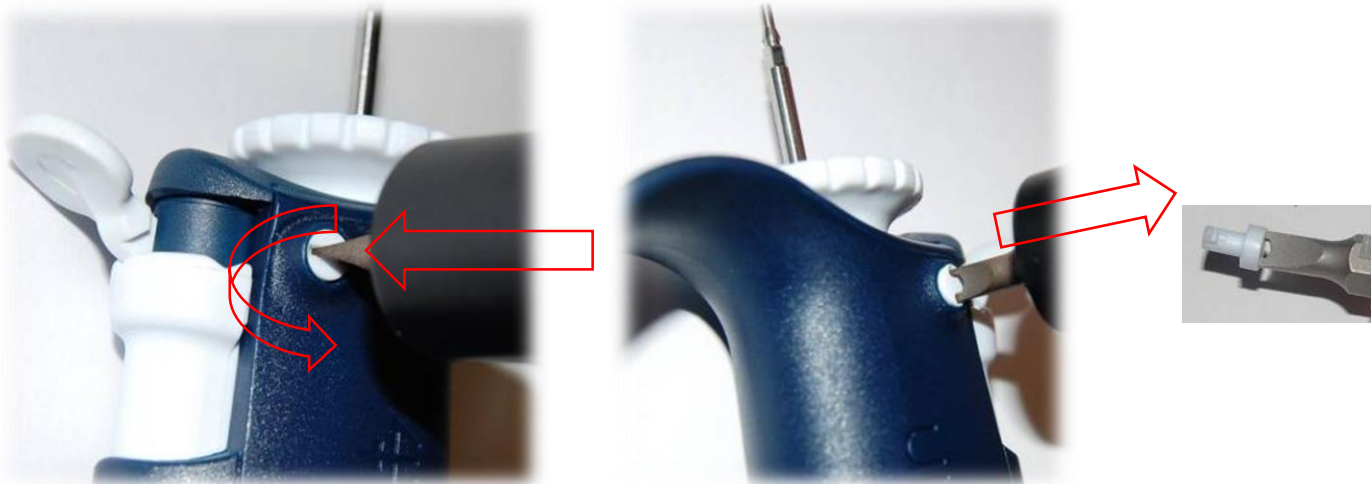
Set the pipette volume at the nominal volume

1- Removing the lock/unlock Assy (all models)

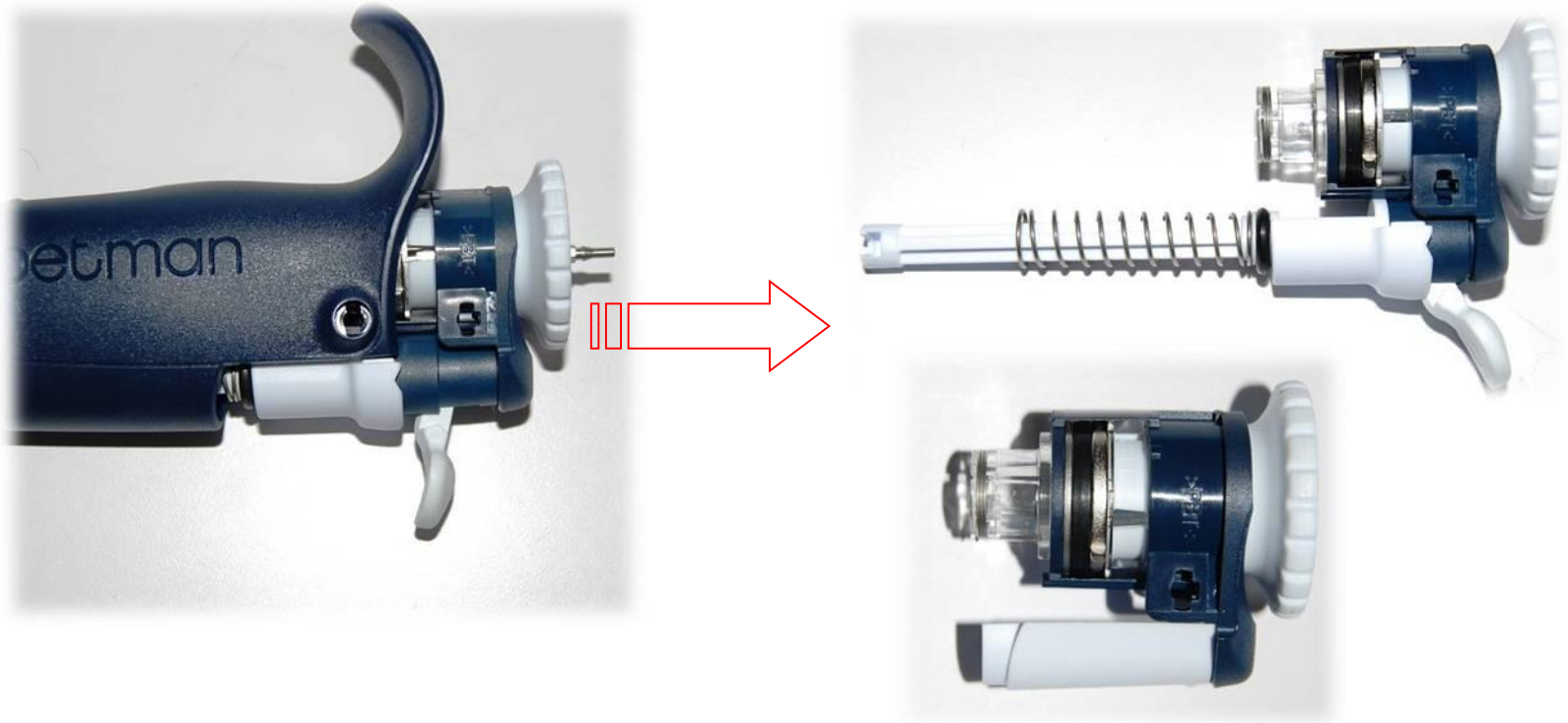


- Remove the lower parts (ejector, connecting nut , tip-holder and piston)
- Remove the push button (Button cannot be re-used)
- Using the cap screw remover FA07052 spanner tool , catch and press firmly the caps screw on both side of the handle ,

The cap screws cannot be re-used as the shape is damaged using the spanner tool

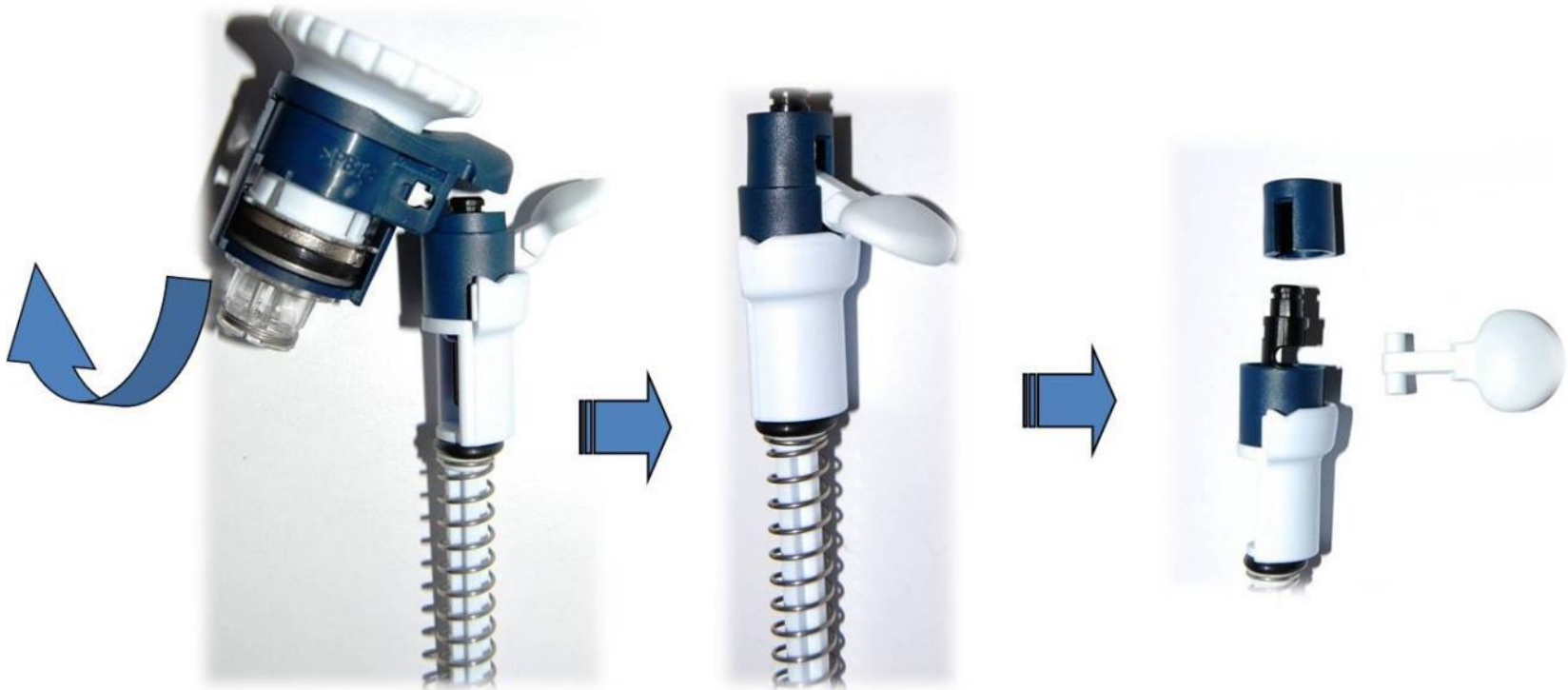


Removing the lock/unlock assy system



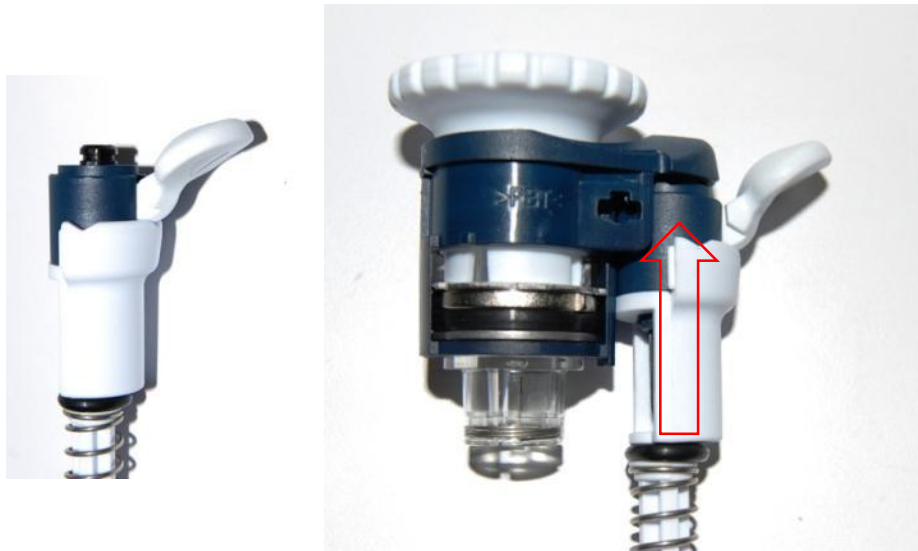
The lock/unlock internal mechanism is not serviceable but the ejection system can be separated and serviced (ejection rod and ejector button)

Servicing the ejection system



- Separate the lock system to the ejection system by setting over the junction
- Slide the button ejector cover
- Remove the button from the location

Servicing the ejection system



Reassemble the ejector button onto the location
Reengage the lock/unlock assy to the ejector rod by clipping the 2 parts

Reassembling the assy system



Disengaging washer must be pushed back to the top of the counter
Check that magnet pin is located on the left side of the components
Engage the lock/unlock assy into the handle
Screw and screw coupling must be aligned
Press firmly the lock/unlock assy inside the handle until you hear a click



Reassembling the assy system

Maintain pressed the system in the handle and insert one of the cap screw



- Reassemble lower components
- Fit the push button
- Check the overtightening values
- Adjust and calibrate the Pipetman

